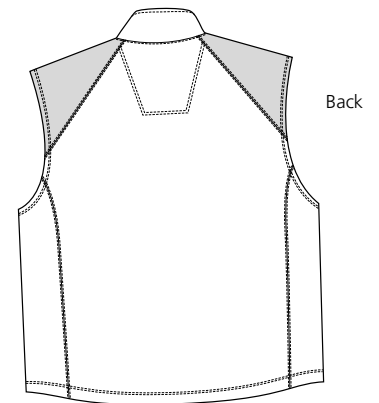
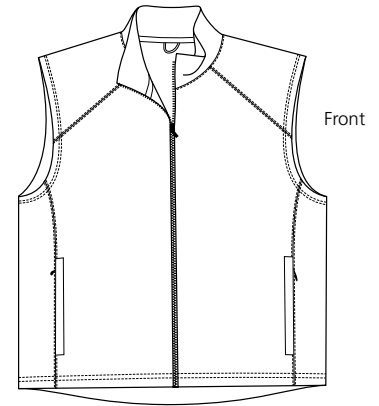


# Signature® Activo Microfleece Vest

PORT & COMPANY®



## F103

- \* 8-ounce \* 100% polyester microfleece with anti-pile finish
- \* 100% polyester microfiber shoulder caps \* Diamond pattern neck tape
- \* Locker loop \* Bungee cord zipper pulls \* Front zipper pockets

### Care Instructions:

Machine wash warm. Wash inside out with like colors. Line dry. Do not bleach. Do not iron. Do not dry clean.

\*Warning\*

Not flame retardant. Avoid contact with open flame.

### Finished Measurements in Inches

Size	XS	S	M	L	XL	2XL	3XL	4XL
Chest	18	20	22	24	26	28	30	32
Length	25	26	27	28	29	30	30.5	31
Collar Height	2.25	2.25	2.25	2.25	2.25	2.25	2.25	2.25
Zipper	22.75	23.75	24.75	25.75	26.75	27.75	28.25	28.75

Areas for Decoration	Left/Right Chest, Full Back	Port Pocket™	NA
----------------------	-----------------------------	--------------	----

Collar measured center back seam to top hem. Chest width measured 1" below arm hole. Body length measured from back neck seam to hem.

### Colors

	Black
	Nickel
	Navy
	Riviera Blue

### Please Note:

Colors shown are approximate and for reference only. For closest match see PMS colors, or for exact match, returnable samples and grommeted samples are available.

Colors	Black	Rose	Navy	Riviera Blue
Textile PMS	19-4007TC	15-1816 TC	19-3926 TC	19-3923 TC
General PMS	Process Black	493 C	7546 C	646 C